

# Simple. Effective. Proven.

**RootX** is the original, simple and fast non-metam sodium foaming root control in easy-to-apply powdered formulation. It foams on contact with water to kill roots, inhibit regrowth, and restore pipe flow capacity.

The patented **RootX** Formulation foams on contact with water, filling the entire pipe to reach the top where 90% of pipeline root intrusion occurs. From start to finish, a **RootX** application takes less than 30 minutes whether you are working with main or lateral lines.

The active ingredient in **RootX** is the aquatic herbicide Dichlobenil that has been used for years to control aquatic weeds. **RootX** contains surfactants, degreasing agents that strip away the grime on roots, allowing Dichlobenil to penetrate the root ends. **RootX** is labeled for use in both sanitary and storm pipes and is not a restricted use product.

## It's a Proven Treatment and Solution

**Rootx** promotes bacterial growth that assists in the decomposition of dead roots. For over a decade, thousands of municipalities and Professional Drain Cleaners have relied on **RootX** for their maintenance solution.

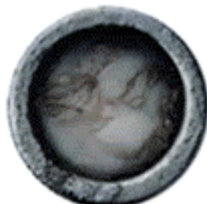
## The Root Intrusion Solution



Roots can clog pipes, causing blockages and sewer overflows.



Mechanical cutting of roots clears roots from pipe...and leaves some behind.



**RootX** attacks and kills the roots.



**RootX** removes virtually all the roots, restoring pipe flow capacity.



## RootX comes with a 12 month guarantee.

General Chemical Co. will warranty that any line treated with **RootX** will not plug or backup due to a living tree root obstruction for a period of 12 months after application. Application must be made in accordance with directions for use. If within this 12 month period a blockage occurs which is caused by live tree roots, Statewide Supply, Inc. will replace the amount of product used to treat that line at no cost. This warranty covers the **RootX** product only and will not compensate for service time or labor.



## RootX Jars

Comes in 2 and 4 lb. Jars.

One 2 lb. Jar: Approximately 50 ft. of 4 inch pipe.

One 4 lb. Jar: Approximately 100 ft. of 4 inch pipe.

One 4 lb. Jar: Approximately 75 ft. of 6 inch pipe.